

## AICTE Mandatory Disclosure

Mandatory Disclosure	: Updated on 5th Feb, 2019
<b>1. AICTE File No.</b>	: F.No.37-3/LEGAL/2002
Date & Extension of Approval Granted Period of Last approval	: AICTE File No : Southern/1-3512731700/2018/EOA/Corrigendum-1 Date & Period of last approval: 04 April 2018

### 2. NAME OF THE INSTITUTION

Name of the Institution	: Mangayarkarasi College of Engineering
Address of the Institution	: Mangayarkarasi Nagar, Paravai
City & Pin code	: Madurai - 625402
State/UT	: Tamil Nadu
Phone number or mobile number	: 9500678636,9150358900
Office hours at the Institution	: 9.00 A.M. to 5.00 P.M.
Academic hours at the Institution	: 9.00 A.M. to 5.00 P.M.
Email	: mangai.enggcoll@gmail.com
Website	: <a href="http://mce-madurai.ac.in">mce-madurai.ac.in</a>
Nearest Railway Station (dist in Km)	: 8 KM
Nearest Airport (dist in Km)	: 15 KM

### 3. Type of Institution

Type of Institution	: Private-Self Financed
Category (1) of the Institution	: Non-Minority
Category (2) of the Institution	: Co-Ed

### 4. Name of the organization running the Institution

Name of the organization running the Institution	: Mangayarkarasi Educational Trust
Type of the organization	: Trust
Address of the organization	: D.No:7-1-139,Mangayarkarsi nagar, Paravai, Madurai
Website of the Organization	: <a href="http://www.mangayarkarasitrust.org">www.mangayarkarasitrust.org</a>

---

## 5. Name of the Affiliating University

Name of the affiliating University	: Anna University, Chennai
Address	: Guindy, Chennai – 600 025.
Website	: <a href="http://www.annauniv.edu">www.annauniv.edu</a>
Latest affiliation period	: 2018 - 2019

---

## 6. Name of Principal / Director

Name of Principal / Director	: Dr. J.Karthikeyan
Exact Designation	: Principal
Phone number or mobile number	: 9092282292
Email	: jkmceprincipal@gmail.com
Highest Degree	: Ph. D.
Field of specialization	: Electrical engineering

---

## 7. Governing Board Members

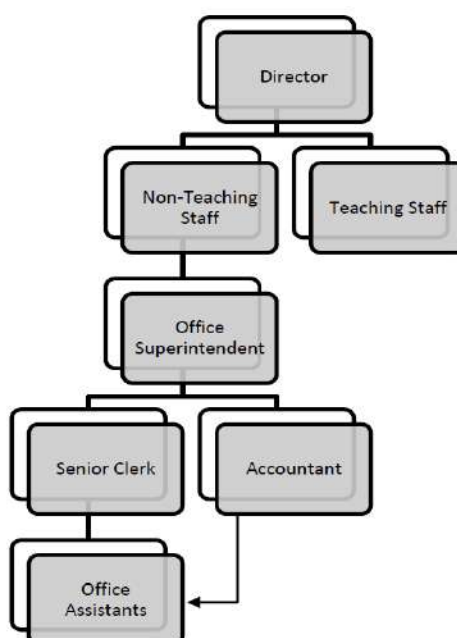
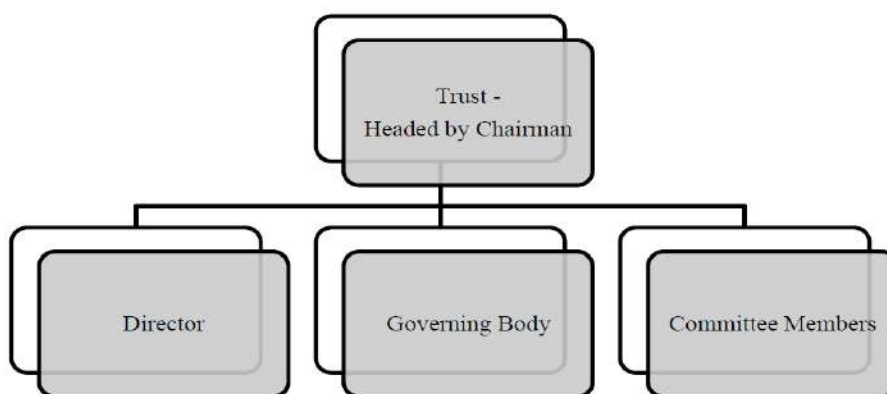
S.No.	Name	Category	Designation
1	Mrs. KALYANIAMMAL R	Chairman	Chairman, Mangayarkarasi College of Engineering
2	Mr. ASHOKKUMAR P	Secretary	Secretary, Mangayarkarasi College of Engineering
3	Mr. SHAKTIPRANESH A	Director	Director, Mangayarkarasi College of Engineering
4	Dr. JAYA K.P	Anna University Nominee	DIRECTOR RESEARCH, Anna University, - chennai-600025
5	Dr. KARTHIKEYAN J	Member Principal	Principal, Mangayarkarasi College of Engineering
6	Mr. VIGNESH T	Member Vice principal	Vice principal, Mangayarkarasi College of Engineering
7	Mrs. GURUVAMMAL N	Member-management	Mangayarkarasi College of Engineering
8	Dr. SARAVANAPRADEEPKUMAR A	Member-management	Mangayarkarasi College of Engineering
9	Dr. DIVYAMEENUPREETHA A	Member-management	Mangayarkarasi College of Engineering

---

## 8. Academic Council Members

S.NO	CATEGORY	DESIGNATION
1	Chairperson	Principal
2	Director	Academics
3	Heads of the Departments	HOD-CIVIL, HOD-CSE, HOD-EEE, HOD-ECE, HOD-MECH, HOD- S&H
Frequency of meetings & date of last meeting : Twice in a Year 21.12.2018		

## 9. Executive Component: Organization chart and Process



---

## 10. Student Feedback on Institutional Governance/faculty performance

A student feedback mechanism is available in the institution. Once in a semester, the students provide the feedback of staff in the prescribed format.

### **MANGAYARKARASI COLLEGE OF ENGINEERING, PARAVAI – 625402. STUDENTS EVALUATION FORM**

Year :	Semester:	Dept.	Date:			
<b>SI No</b>	<b>Name of the Subject</b>	<b>Name of the staff member</b>	<b>Good</b>	<b>Satisfactory</b>	<b>Not satisfactory</b>	
1						
2						
3						
4						
5						

---

## 11. Grievance redressal mechanism for faculty, staff and students

- System for Redressal of grievances of faculty, staff and students
  - The management of the college follows an open system of administration and grievances from staff and students are given the utmost attention.
  - Complaints and suggestion boxes are kept at a number of places in the campus and also in the hostels.
  - The suggestions and complaints are carefully looked into and remedial measures undertaken. Responses are also publicized through notice boards.
  - In case of indiscipline, a committee appointed by the principal enquires into the matter by calling witnesses and recommendations are made about the action to be taken by the management.
  - Grievances regarding the staff in terms of salary, promotions etc., are carefully looked into by the HR department in consultation with the Principal and remedial measures taken.
  - Class Committee meetings are held in which grievances of students are taken note of and remedial measures taken.
  - A student welfare officer looks into the welfare of the students and advises the management for necessary action.
-

## 12. Department wise Details

### Civil Engineering

Name of the Department	:	Civil Engineering
Course	:	BE
Level	:	UG
Year wise Sanctioned Intake	:	2018-19 – 60 2017-18 – 60 2016-17 – 60 2015-16 – 60 2014-15 – 60 2013-14 – 60
Year wise Actual Admissions	:	2018-19 – 2017-18 – 2016-17 – 2015-16 – 2014-15 – 2013-14 –

### Computer Science & Engineering

Name of the Department	:	Computer Science & Engineering
Course	:	BE
Level	:	UG
Year wise Sanctioned Intake	:	2018-19 – 60 2017-18 – 60 2016-17 – 60 2015-16 – 60 2014-15 – 60 2013-14 – 60
Year wise Actual Admissions	:	2018-19 – 2017-18 – 2016-17 – 2015-16 – 2014-15 – 2013-14 –

## Electrical & Electronics Engineering

Name of the Department	:	Electrical & Electronics Engineering
Course	:	BE
Level	:	UG
Year wise Sanctioned Intake	:	2018-19 – 60 2017-18 – 60 2016-17 – 60 2015-16 – 60 2014-15 – 60 2013-14 – 60
Year wise Actual Admissions	:	2018-19 – 2017-18 – 2016-17 – 2015-16 – 2014-15 – 2013-14 –

## Electronics & Communication Engineering

Name of the Department	:	Electronics & Communication Engineering
Course	:	BE
Level	:	UG
Year wise Sanctioned Intake	:	2018-19 – 60 2017-18 – 60 2016-17 – 60 2015-16 – 60 2014-15 – 60 2013-14 – 60
Year wise Actual Admissions	:	2018-19 – 2017-18 – 2016-17 – 2015-16 – 2014-15 – 2013-14 –

## Mechanical Engineering

Name of the Department	:	Mechanical Engineering
Course	:	BE
Level	:	UG
Year wise Sanctioned Intake	:	2018-19 – 60 2017-18 – 60 2016-17 – 60 2015-16 – 60 2014-15 – 60 2013-14 – 60
Year wise Actual Admissions	:	2018-19 – 2017-18 – 2016-17 – 2015-16 – 2014-15 – 2013-14 –

### 13. Information of Infrastructure and other Resources Available

	No's (Qty)	Average Area in Sqm.
Number of class rooms and size of each	13	82
	7	66
Number of Laboratories and size of each	12	102
	5	66
Number of Workshop and size of each	1	200
Number of class Drawing Halls with capacity of each	1	222
Number of computer center's with capacity of each	1	102
Number of Language Laboratories with capacity of each	1	102
Central Examination Facility, Number of rooms and capacity of each	1	50
Barrier Free Built Environment for disabled and elderly persons	Available	
Occupancy Certificate	Available	
Fire and Safety Certificate	Available	

## 14. Admission Quota

Admission Quota	: <b>Engineering &amp; Technology</b>
Entrance Test/ Admission Criteria	: No Entrance Test in Tamil Nadu. Admission based on the marks obtained in +2 Examinations (Physics + Chemistry + Mathematics)
Fees in rupees	: Non Accredited Courses Rs. 40,000/-

---

## 17. Academic Sessions

Academic Sessions	: <b>Engineering &amp; Technology</b>
Examination System, Year /Semester	: Semester Pattern @ Two semesters per year
Period of declaration of results	: within 1 – 2 months after closure of examinations

---

## 18. Counselling / Monitoring

Counseling / Monitoring	- Regular Counseling for students by faculty advisors once every week
Career Counseling	- Done during faculty advising regularly and also by department Placement coordinators
Medical facilities	- A Medical Room is provided in the Institute and Hostel equipped with a doctor & team. In addition to that we have tie up with Mangayarkarasi Clinic, Aarappalayam-Madurai.

## 19. Students Activity Body

**Cultural activities -**



**Sports activities** - Facilities available in the Sports are

### 1. Outdoor Games

Football Field	Hockey Ground	Cricket Net with pitch	
Volleyball Courts (4)	Badminton Courts (6)		

### 2. Indoor Games

Shuttle	Carrom	Chess
Yoga and Meditation Centre		

### Literary activities -

- The English Development Club (EDC) aims at developing the students' overall personality with the main focus on communication skills.
  - The following activities are conducted under the auspices of the EDC :
    - Group Discussion
    - Debates
    - Oral Presentations
    - Role plays
    - Interview techniques
    - Poetry Writing
- in order to develop the student's talent.
- Participation in these programs gives them a face lift to take on the ever challenging world of productive activity.

### Magazine/Newsletter

Technical activities/Tech. Fest	- 1. Every department conducts a national level technical symposium in every Year 2. Departments are also conducting National Conference, International Conference etc.,
Industrial Visits/Tours	- Industrial Visits/Tours Arranged
Alumni activities	- Every Year Alumni day is arranged for each department